

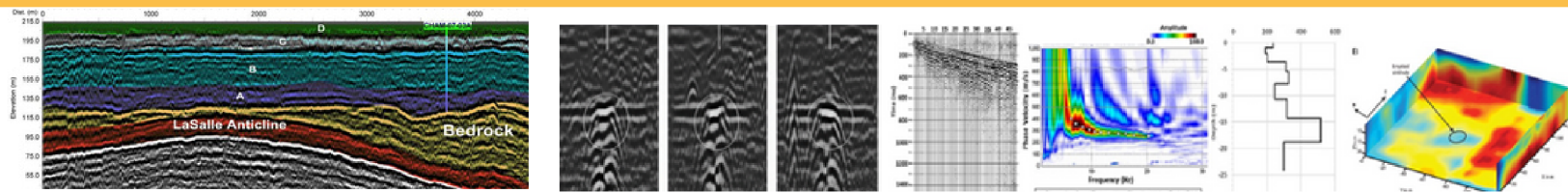
CAPABILITY STATEMENT

MAXIMA GEOPHYSICS

GEOPHYSICAL SERVICE | CONSULTING | TRAINING

CAGE : 9R6P3
UEI : CR8HXM62B6N5
NAICS: 541360/541330/611430
SAM.GOV Small Business

ABOUT US



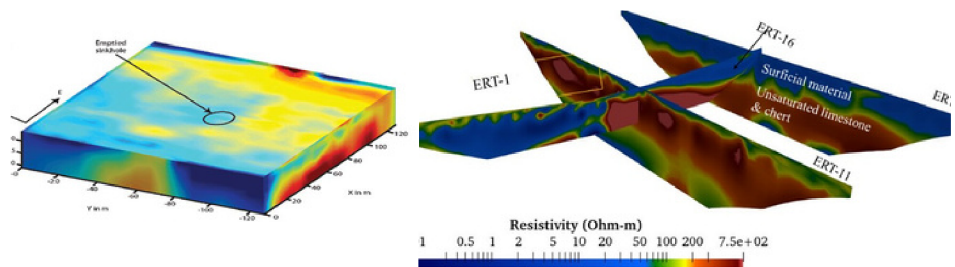
Maxima Geophysics is an innovative geophysics service, consulting, and training provider specializing in comprehensive subsurface investigations using multiple geophysical methods, including seismic, electric, electromagnetic, and ground-penetrating radar. Our team excels in assessing and monitoring the stability of slopes, dams, embankments, levees, landfills, and abandoned mines. We specialize in subsurface assessments for geotechnical studies, detecting voids under roads and concrete slabs, concrete inspections, and utility locating. Our capabilities extend to mapping geological structures for tunneling and underground constructions, groundwater studies, identifying buried infrastructure, and investigating karst features.

KEY STRENGTHS

Our world-class team of geophysicists, geologists, and engineers boasts a stellar record in research and service projects across federal, state, and private sectors. Over a century of collective experience with cutting-edge geophysical technologies to guarantee reliable results. flexible scheduling, rapid response, accessibility to experts via free-phone consultations, diligent project follow-up, collaborative partnerships with clients, and transparent communication of technology capabilities and limitations.

OUR METHODS

Seismic Reflection, Seismic Refraction, Seismic Downhole, Active and Passive MASW, Electrical Resistivity, Induced Polarization (IP), Self-Potential (SP), Electromagnetic, Ground Penetrating Radar (GPR).



TRAININGS BY MAXIMA

- Free Lunch and Learn
- Geophysics for engineers
- Geophysics for Dam safety
- Geophysics for non-technical managers
- Geophysics for practicing geophysicists
- Selecting optimum geophysical tool for your project

CERTIFICATION

CAGE : 9R6P3
UEI : CR8HXM62B6N5

NAICS CODES:
541360- Primary: Geophysical Surveying and Mapping Services
541330- Engineering Services
611430- Professional and Management Development Training





MAXIMA GEOPHYSICS

OUR TEAM'S EXPERIENCE

Dr. Anderson is a geophysics professor emeritus, geological engineering, Missouri University of Science & Technology (formerly UMR). He is expertise in engineering geophysics is internationally recognized. He has over 35 years experience in with geophysical methods



Dr. Ismail is a widely recognized geophysicist with over 25 years of experience in consulting, teaching, and research. He holds a license as a Professional Geophysicist in Texas and is well-versed in techniques such as seismic reflection, MASW, downhole seismic, electric resistivity, IP, SP and Electromagnetic surveys.



Dr. Stohr, a retired engineering Geologist from Illinois State Geological Survey has over 30 years of experience covering waste management, natural hazards, close-range Lidar applied to CO2, groundwater landfill and hazardous waste mapping.



Dr. Bulut, a professor at Oklahoma State University. He is known for his experience with expansive soils, foundations and pavements on problematic soils, geotechnical engineering challenges with expansive soils, slab-on-ground foundations, and soil-structure interaction.



Dr. Stumpf is a licensed geologist. He has a wealth of experience with geologic mapping, engineering geology, bedrock and aquifer characterization, geothermal energy projects. Experience with developong 3D models and simulations



Mr. Madallah is a junior geophysicist with a robust foundation in geology. With years of hands-on experience as a geophysicist, Mr. Madallah wields a diverse toolkit that includes an array of powerful techniques.



PROJECTS BY OUR TEAM

- Missouri Department of Transpiration (MoDot)
- Illinois Clean Coal Institute (ICCI)
- A&M Engineering and Environmental Services, Inc.
- T&F Geoscience & Engineering and Consulting
- SCI Engineering, Inc.
- Illinois State Geological Survey (ISGS)
- Geoengineering, Inc.
- Grand River Dam Authority (GRDA)
- National Science Foundation (NSF)
- Missouri Department of Public Safety
- Lake Sherwood Estate
- Missouri Department of Natural Resources
- US Department of Transportation
- EXXONMOBIL Upstream Research Comp
- Selecttech Service Corporation
- Eagle Pitcher
- Raytheon Comany
- Carter Oil and Gas

